



# Guardian TQ-288W Wide Band Outdoor Omni Antenna

## FEATURES

- Wide Band (698 – 2700 MHz)
- 2G/3G/4G and WLAN systems
- Designed for outdoor use only
- Omni-directional antenna 3-4 dB Gain



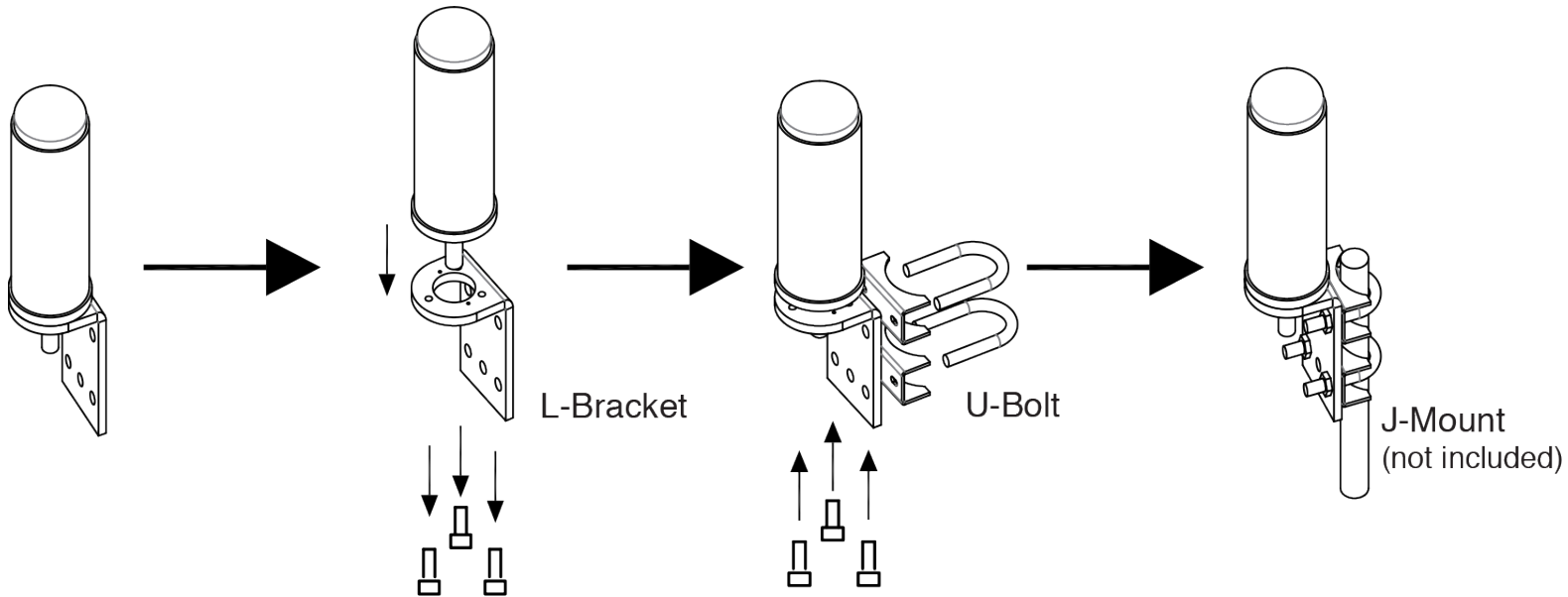
## Technical Specifications

Frequency	698-960 / 1700-2700 MHz
Input Impedance	50 ohm
Antenna Gain	2 – 3 dB (at 698 – 960 MHz) 3 – 4 dB (at 1700 – 2700 MHz)
VSWR	≤1.8
Power Rating	10 W
Polarization Type	Vertical
Radiation	Omni-Directional
Maximum Power	100 Watt
Connector Type	F-Female
Dimension	9.5" x 3.9"
Color	White
Mount	Mounts on the roof or wall
Beamwidth	E:72 H:92/ E:50 H:80
Operating Temperature	-22°F to +176°
Material	Fiberglass

The TQ-288W wide band fiberglass antenna is an omni-directional antenna that can receive and send signals from 360° and does not need to be pointed toward a cellular tower. Range of antenna is approximately 30 miles to and from cellular towers free of obstructions.

This wideband outside antenna transmits and receives signals in all directions and is designed to cover 2G/3G/4G and WLAN systems for Cellular, PCS, AWS and LTE frequencies.

Besides the antenna itself, parts include mounting equipment for either a flat horizontal surface or a wall. It should be mounted in an upright position for best results.



### Installation

1. Place antenna through the hole on the top of the L-Bracket.
2. Attached 3 screws through the L-Bracket and into holes on the base of the antenna.
3. Place the 2 U-bolt ends with the J-Mount (not included) inside, through the U-Bolt base and then through the LBracket.
4. Attach the 3 lock washers to the ends of the U-Bolts on the back of the L-Bracket and tighten with the provided Hex nuts.

### Ordering Information

Model	Description	Stock No.
TQ-288W	TQ-288W Wide Band Omni-Directional 50 Ohm Fiberglas Antenna 3 To 4dbi	3996054